

Online Appendix for the following article:

Title:

Retention Experiment for Plantation Forestry in Sorachi, Hokkaido (REFRESH): A large-scale experiment for retaining broad-leaved trees in conifer plantations

Authors:

Yuichi Yamaura, Nobuhiro Akashi, Akira Unno, Kenichi Ozaki, Toshiyuki Tsushima, Akiko Nagasaka, Yu Nagasaka and Kenichi Ozaki

This appendix file includes two figures:

Fig. S1. Post-harvest experimental units.

Fig. S2. Preparation, tree planting, and weeding in the REFRESH project

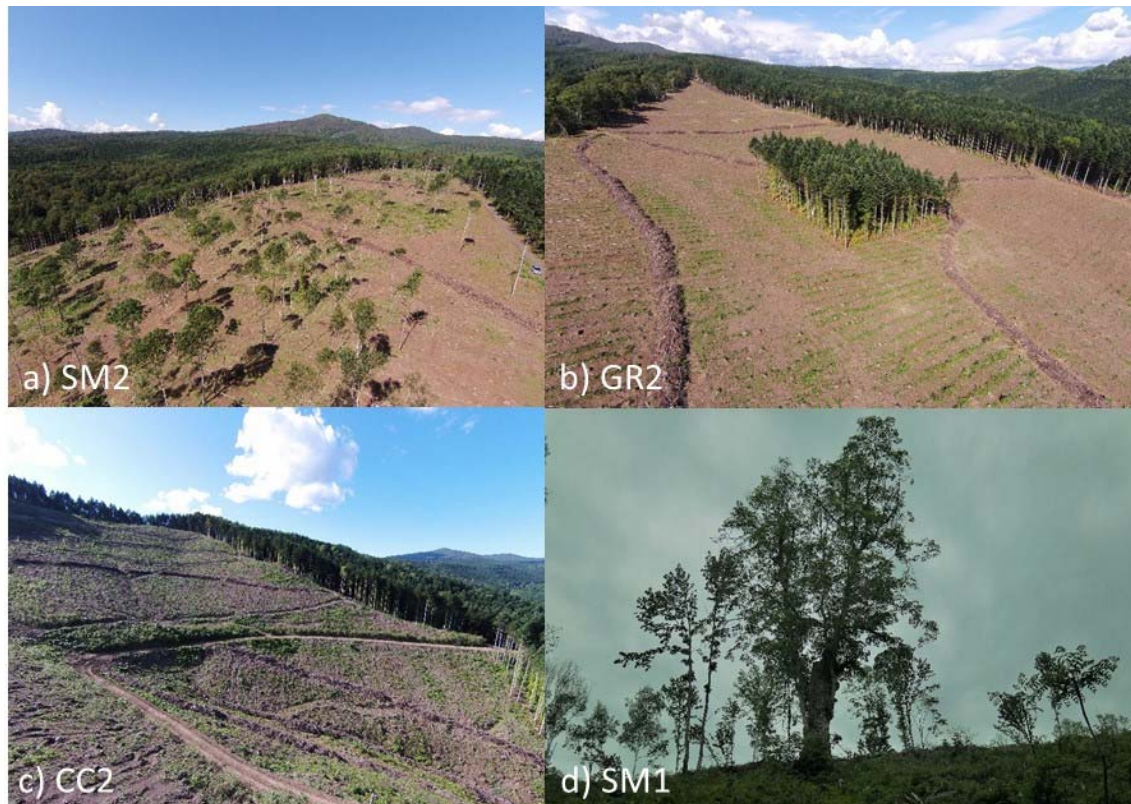


Fig. S1. Post-harvest experimental units.

Abbreviations: SM (medium amount of dispersed retention); GR (aggregated retention); CC (clear-cutting). Numbers (1 or 2) in abbreviated names indicate that they are experimental units of the first or second set, respectively. The last inset figure (d) indicates the large broad-leaved trees presumed to have been retained when the first-generation fir plantation was established (1940–1960).

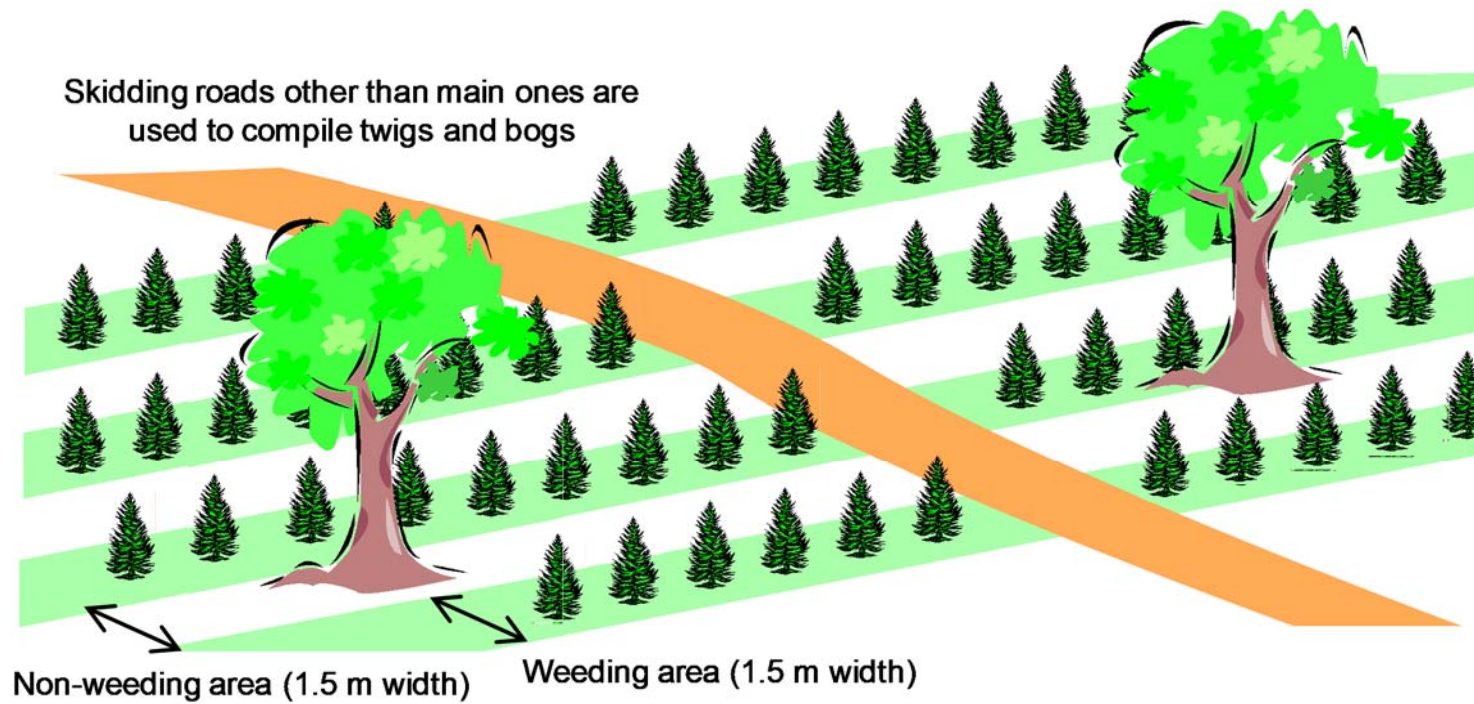


Fig. S2. Preparation, tree planting, and weeding in the REFRESH project